

Bb Bass

GRÅSTEN MARCH

Composer:Bente Ibenfeldt

Arr. Knud Graugaard

Presto


5

Measure 5 of the piece. The staff is in treble clef with a key signature of one sharp (F#). The melody consists of eighth and quarter notes. The measure ends with a double bar line. The dynamic marking *sfz* (sforzando) is placed below the staff, and the dynamic marking *f* (forte) is placed below the staff.

10 **A**

[illegible]

20

[illegible]

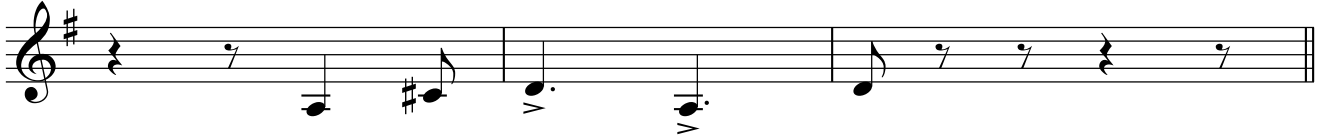
28 **B**

Measures 28-31 of Example 1, Part 2. Measure 28 is a whole rest. Measure 29 contains a half note G4 (marked *ff*), a quarter note A4 (marked *ff*), and a quarter note B4 (marked *ff*). Measure 30 contains a half note G4 (marked *ff*), a quarter note F#4 (marked *ff*), and a quarter note E4 (marked *ff*). Measure 31 is a whole rest.

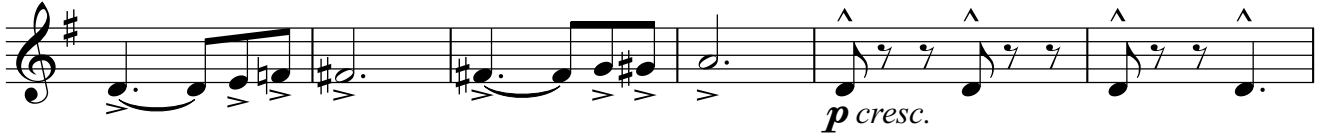
GRÅSTEN MARCH
Bb Bass

2

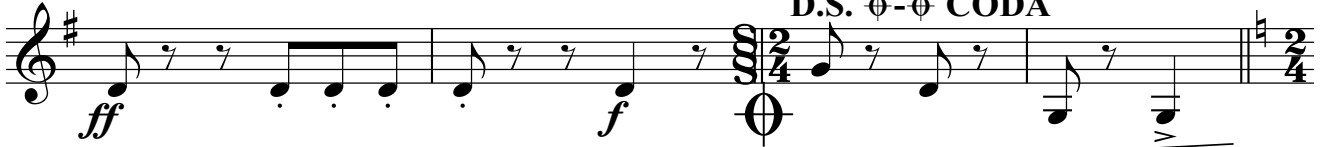
33



36



42



46



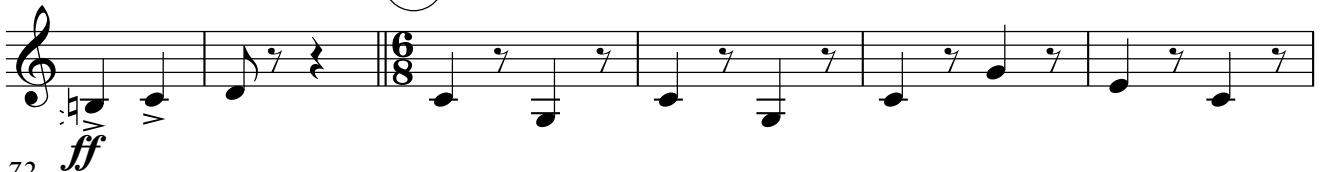
50



57



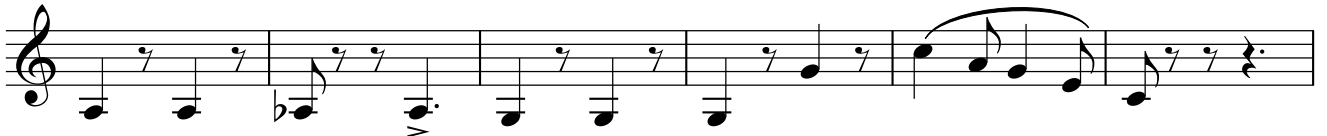
66



72



78



84

